

Bulk Summary Report

For <Company Name>

Location : <Building Description > Appears On All Pages
 second line only on first page
 Project : <job.id>

| 6648 | Build ID | Sample Location / Description | Result(s) | TP |
|------|----------|---|--|-----|
| 1 | BS-05 | Elbow Fitting Cement Rm 105 Multiple Layers and/or Phases | Layer 2 Grey Fibrous 50 - 60 % Chrysotile Asbestos See Detailed Asbestos Report | .T. |
| 2 | BS-06 | Beige with Tan & Brown Lino Rm 191 | Layer 1 Light Brown Asbestos Fibres Not Detected | --- |
| 3 | BS-14 | DWJC Rm 123 - Wall Multiple Layers and/or Phases | Phase 3 Light Grey Fibrous 1 - 5 % Chrysotile Asbestos See Detailed Asbestos Report | .T. |
| 4 | BS-16 | White with Blue VFT Rm 101 | Layer 1 White Asbestos Fibres Not Detected | --- |
| 5 | BS-44 | Air-O-Cell PI Rm 191 Multiple Layers and/or Phases | Layer 2 Grey Fibrous Sheets 90 - 95 % Chrysotile Asbestos See Detailed Asbestos Report | .T. |
| 6 | BS-53 | Stucco | 1 - 5 % Chrysotile Asbestos See Detailed Asbestos Report | .T. |
| 7 | BS-88 | Texture Coat Kitchen - Ceiling Multiple Layers and/or Phases | Layer 2 Light Grey / Coating 1 - 5 % Chrysotile Asbestos See Detailed Asbestos Report | .T. |
| 8 | BS-93 | Compressor Bldg Refrig Discharge Pipe Insul W. End Multiple Layers and/or Phases | Phase 1 White Fibrous 10 - 20 % Amosite Asbestos See Detailed Asbestos Report | .T. |
| 9 | BS-55 | Attic Insulation [Garage] | DNQ Asbestiform Amphibole See Detailed Vermiculite Report | .T. |
| 10 | BS-58 | Attic Insulation [House] | 1.73% [wt/wt] Asbestiform Amphibole See Detailed Vermiculite Report | .T. |
| 11 | BS-83 | Attic Insulation [Tool Shed] | Asbestos Fibres Not Detected | --- |

Comments

See Detailed Bulk Specific Report for Analytical Method and Associated Detection Limit
 TP Means Tested Positive for the Analysis Requested; T - Present
 LP - Means Percent : Layer or Phase of Whole Sample
 ACM Means Asbestos Containing Material; T
 DNQ - Means Detected Not Quantitated
 Samples Submitted Will Be Retained For 30 Days After Receipt And Will Be Disposed Of Thereafter Unless Otherwise Notified In Writing
 Sample Submitted By <Company Name>

September 14, 2016

H. McKnight

Reviewed By

Executive Summary Bulk Asbestos Report

For <Company Name>

Location : <Building Description > Appears On All Pages

Project <job.id> sample(s) range 1 - 11

Project : <job.id>

| 6648 | Build ID | Sample Location / Description | Result(s) | Analyzed | TP |
|-------|----------|---|--|-----------------------|-----|
| 1 . 2 | BS-05 | Elbow Fitting Cement Rm 105 Layer 2 Grey Fibrous | 50 - 60 % Chrysotile Asbestos 1 - 5 % Fibrous Glass > 35 % Non-fibrous | May 7 2005 LP 80 % | .T. |
| 3 . 3 | BS-14 | DWJC Rm 123 - Wall Phase 3 Light Grey Fibrous | 1 - 5 % Chrysotile Asbestos > 95 % Non-fibrous | May 9 2005 LP 30 % | .T. |
| 5 . 2 | BS-44 | Air-O-Cell PI Rm 191 Layer 2 Grey Fibrous Sheets | 90 - 95 % Chrysotile Asbestos > 5 % Non-fibrous | May 9 2005 LP 85 % | .T. |
| 6 | BS-53 | Stucco | 1 - 5 % Chrysotile Asbestos > 95 Non-Fibrous | May 5 2005 | .T. |
| 7 . 2 | BS-88 | Texture Coat Kitchen - Ceiling Layer 2 Light Grey / Coating | 1 - 5 % Chrysotile Asbestos > 95 % Non-fibrous | May 5 2005 LP 65 % | .T. |
| 7 . 4 | BS-88 | Texture Coat Kitchen - Ceiling Layer 4 Light Grey Patches | 1 - 5 % Chrysotile Asbestos > 95 % Non-fibrous | May 5 2005 LP 5 % | .T. |
| 8 . 1 | BS-93 | Compressor Bldg Refrig Discharge Pipe Insul W. End Phase 1 White Fibrous | 10 - 20 % Amosite Asbestos 1 - 10 % Chrysotile Asbestos 1 - 5 % Crocidolite Asbestos > 65 % Non-fibrous | May 7 2005 LP 65 % | .T. |
| 9 | BS-55 | Attic Insulation [Garage] | DNQ Asbestiform Amphibole See Detailed Vermiculite Report | May 5 2005 | .T. |
| 10 | BS-58 | Attic Insulation [House] | 1.73% [wt/wt] Asbestiform Amphibole See Detailed Vermiculite Report | May 5 2005 | .T. |

Asbestos 9

See Detailed Bulk Report for Analytical Method and Associated Detection Limit

TP Means Tested Positive for Analysis Requested; T - Present

LP - Means Percent : Layer or Phase of Whole Sam

DNQ - Means Detected Not Quantitated

Samples Submitted Will Be Retained For 30 Days After Receipt And Will Be Disposed Of Thereafter Unless Otherwise Notified In Writing

Sample Submitted By <Company Name>

September 14, 2016

H. McKnight

Reviewed By

Detailed Bulk Asbestos Report

For <Company Name>

Location : <Building Description > Appears On All Pages
second line only on first page
Project : <job.id>

| 6648 | Build ID | Sample Location / Description | Result(s) | Analyzed | Analyst ACM |
|---|--------------|--|--|-------------------------------|---------------|
| 1 . 1 | BS-05 | Elbow Fitting Cement Rm 105 Layer 1 Fibrous Weave / Coatin | Asbestos Fibres Not Detected 20 - 30 % Cellulose Fibres > 70 % Non-fibrous | May 7 2005 LP 20 % | GN --- |
| 1 . 2 | BS-05 | Elbow Fitting Cement Rm 105 Layer 2 Grey Fibrous | 50 - 60 % Chrysotile Asbestos 1 - 5 % Fibrous Glass > 35 % Non-fibrous | May 7 2005 LP 80 % | GN .T. |
| 2 . 1 | BS-06 | Beige with Tan & Brown Lino Rm 191 Layer 1 Light Brown | Asbestos Fibres Not Detected 40 - 50 % Cellulose Fibres > 50 % Non-fibrous | May 7 2005 LP 60 % | GN --- |
| * Sample [Composite] Subjected To An Ashing Procedure | | | | | |
| 2 . 2 | BS-06 | Beige with Tan & Brown Lino Rm 191 Layer 2 Light Grey | Asbestos Fibres Not Detected 40 - 50 % Cellulose Fibres > 50 % Non-fibrous | May 7 2005 LP 29 % | GN --- |
| 2 . 3 | BS-06 | Beige with Tan & Brown Lino Rm 191 Layer 3 Brown Fibrous Weave | Asbestos Fibres Not Detected 95 -100 % Cellulose Fibres > 1 % Non-fibrous | May 7 2005 LP 10 % | GN --- |
| 2 . 4 | BS-06 | Beige with Tan & Brown Lino Rm 191 Layer 4 Light Brown Mastic Patch | Asbestos Fibres Not Detected 95 -100 % Non-fibrous | May 7 2005 LP 1 % | GN --- |
| 3 . 1 | BS-14 | DWJC Rm 123 - Wall Phase 1 White / Coating | Asbestos Fibres Not Detected 95 -100 % Non-fibrous | May 9 2005 LP 50 % | GN --- |
| 3 . 2 | BS-14 | DWJC Rm 123 - Wall Phase 2 Brown Fibrous | Asbestos Fibres Not Detected 90 - 95 % Cellulose Fibres > 5 % Non-fibrous | May 9 2005 LP 20 % | GN --- |
| 3 . 3 | BS-14 | DWJC Rm 123 - Wall Phase 3 Light Grey Fibrous | 1 - 5 % Chrysotile Asbestos > 95 % Non-fibrous | May 9 2005 LP 30 % | GN .T. |
| 4 . 1 | BS-16 | White with Blue VFT Rm 101 Layer 1 White | Asbestos Fibres Not Detected 95 -100 % Non-fibrous | May 9 2005 LP 80 % | GN --- |
| * Layer 1 Subjected To An Ashing and Acid Washing Procedure | | | | | |

Detailed Bulk Asbestos Report

For <Company Name>

Location : <Building Description > Appears On All Pages

Project : <job.id>

| 6648 | Build ID | Sample Location / Description | Result(s) | Analyzed | Analyst | ACM |
|--|--------------|---|---|-------------------|-----------|------------|
| 4 . 2 | BS-16 | White with Blue VFT Rm 101 Layer 2 Black Mastic | Asbestos Fibres Not Detected 95 -100 % Non-fibrous | May 9 2005 | GN | --- |
| * Layer 2 Subjected To An Ashing Procedure | | | | | | |
| 5 . 1 | BS-44 | Air-O-Cell PI Rm 191 Layer 1 Black Fibrous Weave | Asbestos Fibres Not Detected 60 - 70 % Cellulose Fibres > 30 % Non-fibrous | May 9 2005 | GN | --- |
| * Layer 1 Subjected To An Ashing Procedure | | | | | | |
| 5 . 2 | BS-44 | Air-O-Cell PI Rm 191 Layer 2 Grey Fibrous Sheets | 90 - 95 % Chrysotile Asbestos > 5 % Non-fibrous | May 9 2005 | GN | .T. |
| LP 85 % | | | | | | |
| 6 | BS-53 | Stucco | 1 - 5 % Chrysotile Asbestos > 95 Non-Fibrous | May 5 2005 | GN | .T. |
| * Sample Subjected To A Grinding and Acid Washing Procedure | | | | | | |
| 7 . 1 | BS-88 | Texture Coat Kitchen - Ceiling Layer 1 White / Coating | Asbestos Fibres Not Detected 95 -100 % Non-fibrous | May 5 2005 | GN | --- |
| LP 20 % | | | | | | |
| 7 . 2 | BS-88 | Texture Coat Kitchen - Ceiling Layer 2 Light Grey / Coating | 1 - 5 % Chrysotile Asbestos > 95 % Non-fibrous | May 5 2005 | GN | .T. |
| LP 65 % | | | | | | |
| 7 . 3 | BS-88 | Texture Coat Kitchen - Ceiling Layer 3 Beige Fibrous | Asbestos Fibres Not Detected 95 -100 % Cellulose Fibres > 1 % Non-fibrous | May 5 2005 | GN | --- |
| LP 10 % | | | | | | |
| 7 . 4 | BS-88 | Texture Coat Kitchen - Ceiling Layer 4 Light Grey Patches | 1 - 5 % Chrysotile Asbestos > 95 % Non-fibrous | May 5 2005 | GN | .T. |
| LP 5 % | | | | | | |
| 8 . 1 | BS-93 | Compressor Bldg Refrig Discharge Pipe Insul W. End Phase 1 White Fibrous | 10 - 20 % Amosite Asbestos 1 - 10 % Chrysotile Asbestos 1 - 5 % Crocidolite Asbestos > 65 % Non-fibrous | May 7 2005 | GN | .T. |
| LP 65 % | | | | | | |

Detailed Bulk Asbestos Report

For <Company Name>

Location : <Building Description > Appears On All Pages

Project : <job.id>

| 6648 | Build ID | Sample Location / Description | Result(s) | Analyzed | Analyst | ACM |
|-----------|--------------|---|--|-------------------|-----------|------------|
| 8 . 2 | BS-93 | Compressor Bldg Refrig Discharge Pipe Insul W. End Phase 2 Brown Fibrous | Asbestos Fibres Not Detected 95 -100 % Cellulose Fibres > 1 % Non-fibrous | May 7 2005 | GN | --- |
| 9 | BS-55 | Attic Insulation [Garage] | DNQ Asbestiform Amphibole See Detailed Vermiculite Report | May 5 2005 | GN | .T. |
| 10 | BS-58 | Attic Insulation [House] | 1.73% [wt/wt] Asbestiform Amphibole * Non-homogeneous Mixture: Vermiculite, Pink Fibrous Glass and Wood See Detailed Vermiculite Report | May 5 2005 | GN | .T. |
| 11 | BS-83 | Attic Insulation [Tool Shed] | Asbestos Fibres Not Detected See Detailed Vermiculite Report | May 5 2005 | GN | --- |

Comments

Samples Analyzed In Accordance With The NIOSH ASBESTOS (bulk) by PLM Method 9002 [15 August 1994]
 Asbestos may be detected at Less Than 0.5 % by Visual Estimation, but this detection limit is highly material dependant
 ACM Means Asbestos Containing Material; T - Present
 LP - Means Percent : Layer or Phase of Whole Sample
 DNQ - Means Detected Not Quantitated
 Samples Submitted Will Be Retained For 30 Days After Receipt And Will Be Disposed Of Thereafter Unless Otherwise Notified In Writing
 Sample Submitted By <Company Name>

September 14, 2016 [Facsimile]

G. Nawrocki
Analyst

H. McKnight
Reviewed By

Detailed Bulk Asbestos in Vermiculite Report

For <Company Name>

Location : <Building Description > Appears On All Pages
 second line only on first page
 Project : <job.id>

| 6648 | Build ID | Sample Location / Description | Result(s) | Analyzed | Analyst | ACM |
|------|----------|---|---|------------|---------|-----|
| 9 | BS-55 | Attic Insulation [Garage] | DNQ Asbestiform Amphibole DNQ Cellulose Fibres DNQ Hair Fibres DNQ Vermiculite DNQ Non-fibrous | May 5 2005 | GN | .T. |
| 10 | BS-58 | Attic Insulation [House] | 1.73% [wt/wt] Asbestiform Amphibole DNQ Fibrous Glass DNQ Hair Fibres DNQ Vermiculite DNQ Non-fibrous | May 5 2005 | GN | .T. |
| | | * Non-homogeneous Mixture: Vermiculite, Pink Fibrous Glass and Wood | | | | |
| 11 | BS-83 | Attic Insulation [Tool Shed] | Asbestos Fibres Not Detected DNQ Vermiculite DNQ Non-fibrous | May 5 2005 | GN | --- |

Comments

Fibrous / Mineral Components Analyzed In Accordance With The NIOSH ASBESTOS (bulk) by PLM Method 9002 [15 August 1994]
 Research Method for Sampling and Analysis of Fibrous Amphibole in Vermiculite Attic Insulation EPA/600/R-04/004 January 2004
 Detection Limit for Asbestiform Amphibole 'Rapid Screening' is less than 0.01 % (by weight) , Dependant on Original Sample Size
 ACM Means - Asbestos Containing Material; T - Present
 LP Means - Percent : Layer or Phase of Whole Sample.
 DNQ Means - Detected Not Quantitated
 < Means - Less Than
 Samples Submitted Will Be Retained For 30 Days After Receipt And Will Be Disposed Of Thereafter Unless Otherwise Notified In Writing
 Sample Submitted By <Company Name>

September 14, 2016 [Facsimile]

G. Nawrocki
Analyst

H. McKnight
Reviewed By

<Project> <Building Id> BS . 55
Attic Insulation Garage
wh6648 . 9



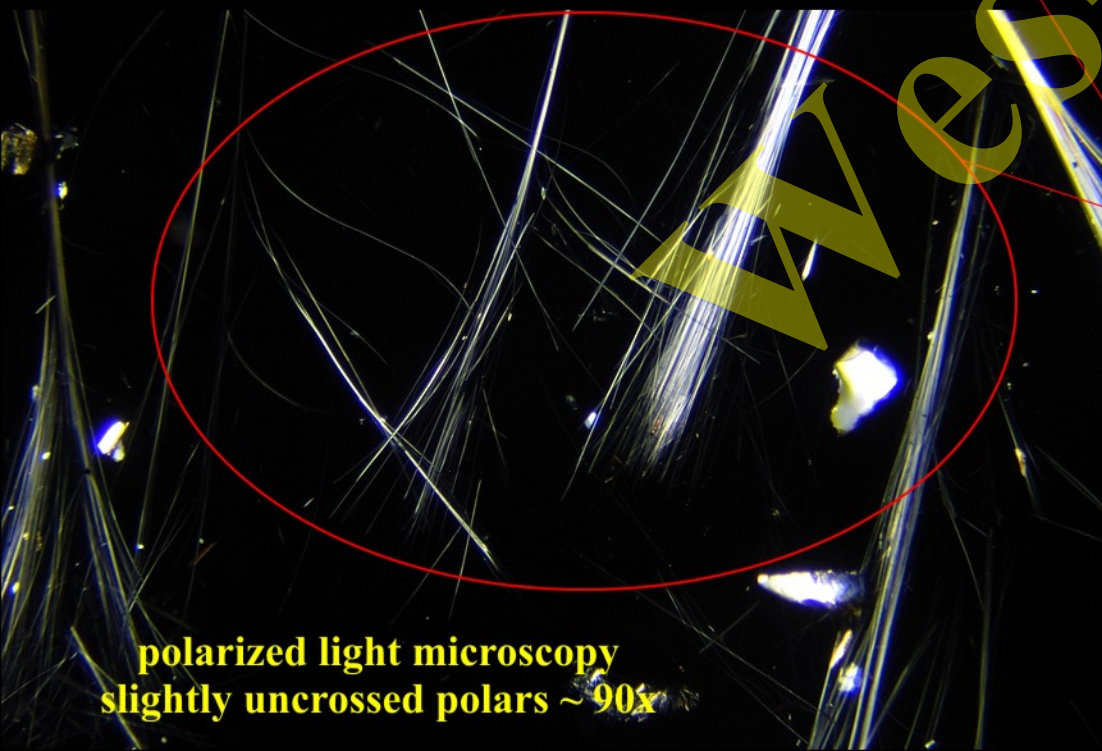
submitted sample

stereo binocular microscopy ~ 15x



washed & sieved

asbestos fibres
[asbestiform amphiboles]



polarized light microscopy
slightly uncrossed polars ~ 90x



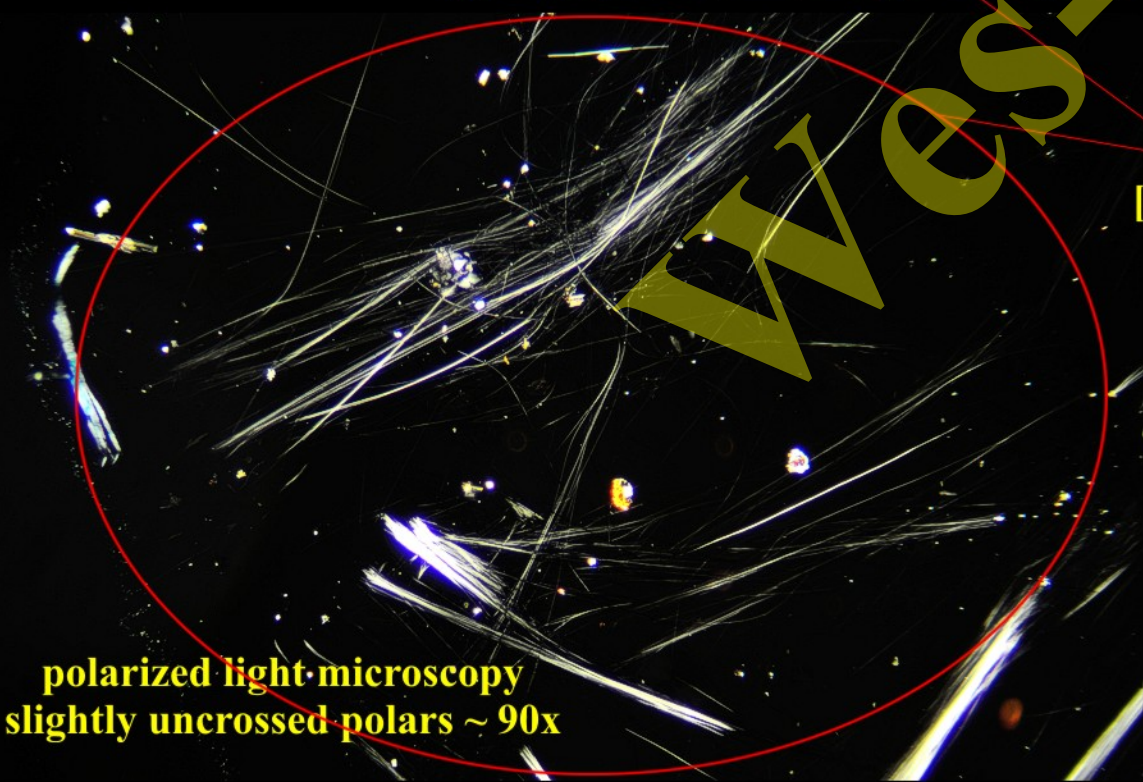
submitted sample

stereo binocular microscopy ~ 15x



washed & sieved

asbestos fibres
[asbestiform amphiboles]



polarized light microscopy
slightly uncrossed polars ~ 90x